

RAMONA THE ACRES SEPTIC-TO-SEWER PLANNING STUDY

DECEMBER 5th, 2024



N|V|5

Phase 1: Initial Planning and Outreach (2 years)

Workplan Development



Draft Feasibility Study



Public Outreach



Final Feasibility Study and Outreach Results

Phase 2 – Updated Workplan: Complete CWSRF Funding Application (2.5 years)



GENERAL PACKAGE



ENVIRONMENTAL
PACKAGE



TECHNICAL
PACKAGE



FINANCIAL
SECURITY PACKAGE

Phases 2 and 3– DFA Application Review and Construction (3.5 Years)



DFA Review, Contract for Funding



Bid Project for Construction



Complete Construction per Plans and Specifications-Connect Customers



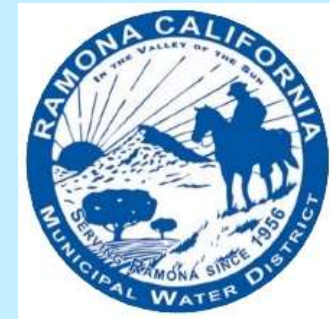
Construction Oversight

SAFER and S2S Technical Assistance Support for Project

"Funding for this project has been provided in full or in part through an agreement with the State Water Resources Control Board. The contents of this document do not necessarily reflect the views and policies of the foregoing, nor does mention of trade names or commercial products constitute endorsement or recommendation for use."

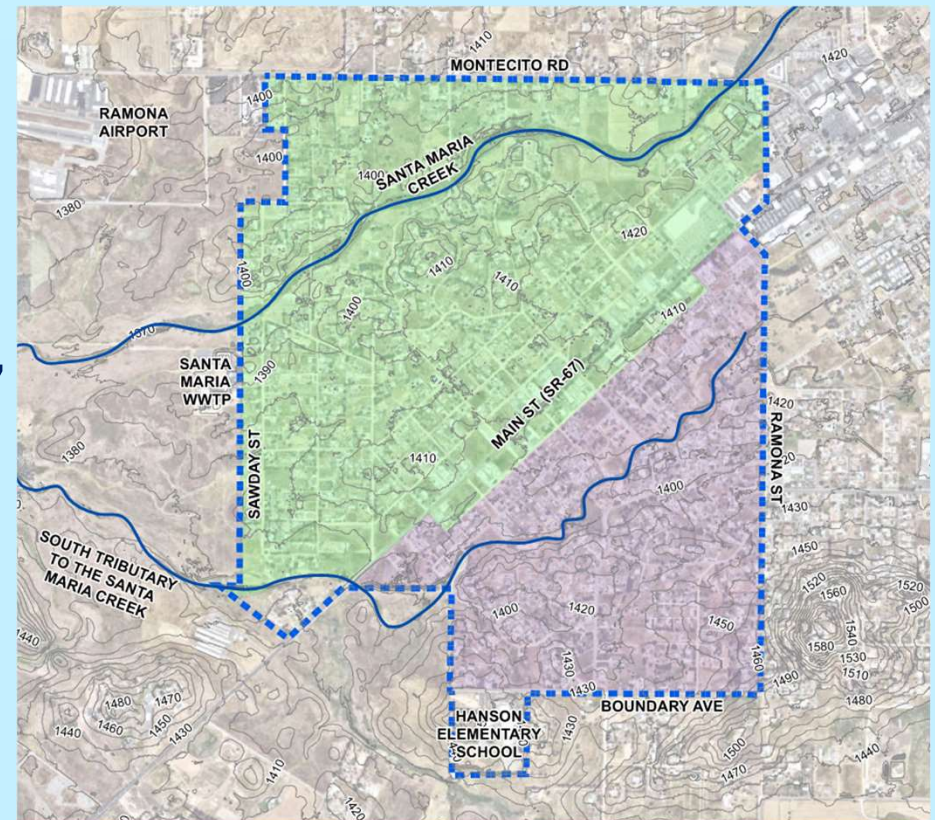
PROJECT BACKGROUND

- Expanding RMWD sewer service to customers currently on septic systems
- Protect groundwater quality and reduce maintenance of septic systems
- Study prepared for RCAC and funded by SWRCB SAFER and S2S program



STUDY AREA LOCATION

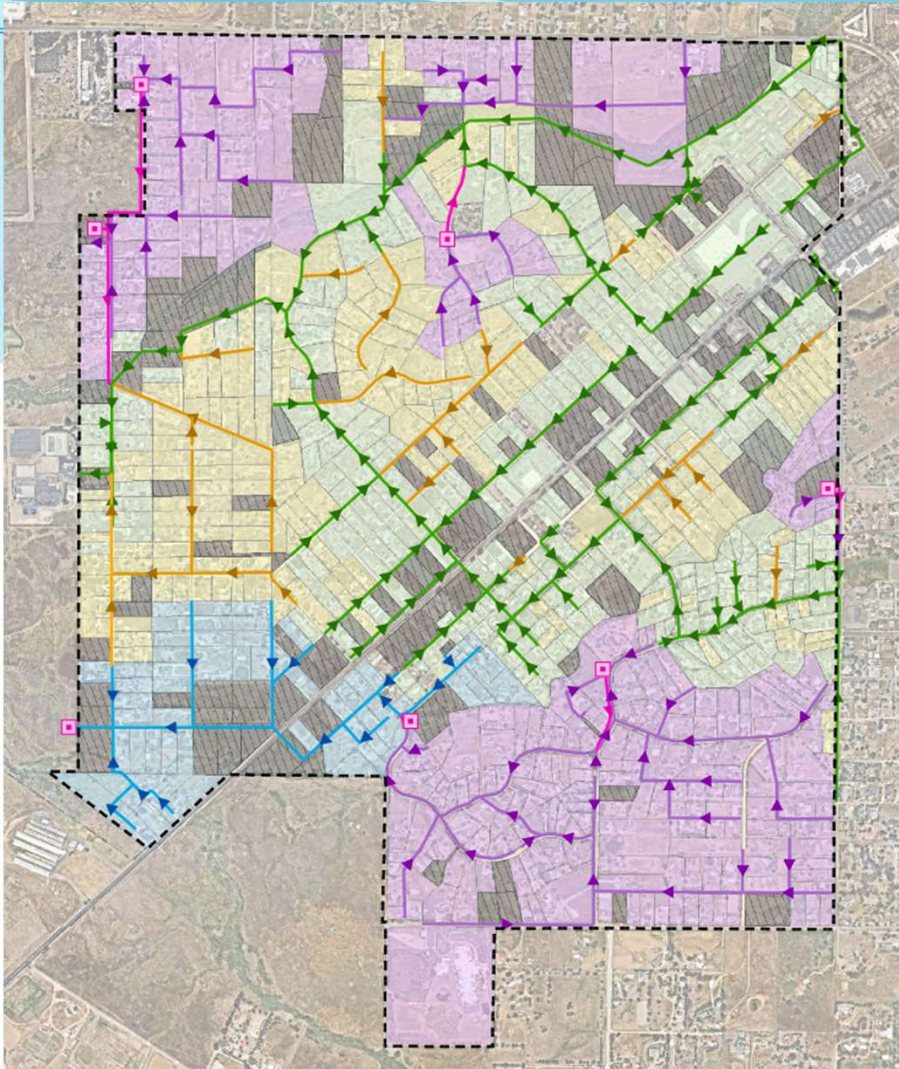
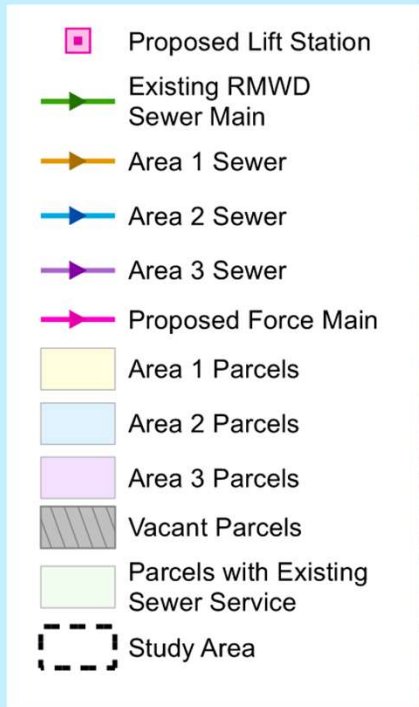
- 1,200 acres, within RMWD boundary
- In Santa Maria Sewer Service Area, served by Santa Maria WWTP
- Study area: 996 parcels
 - 327 parcels receiving RMWD sewer service
 - 517 parcels not receiving RMWD sewer service
 - 152 vacant parcels



PRELIMINARY SEWER LAYOUT DEVELOPMENT

- Developed based on topography of study area
- Gravity sewer mains prioritized
- Delineated study area into (3) areas
 - Area 1 – Parcels adjacent to existing RMWD sewers and parcels that can be connected with gravity sewers more easily
 - Area 2 – Southwest area that requires a sewer lift station
 - Area 3 – Other areas requiring lift stations or pipelines in environmentally sensitive areas.

PRELIMINARY SEWER LAYOUT

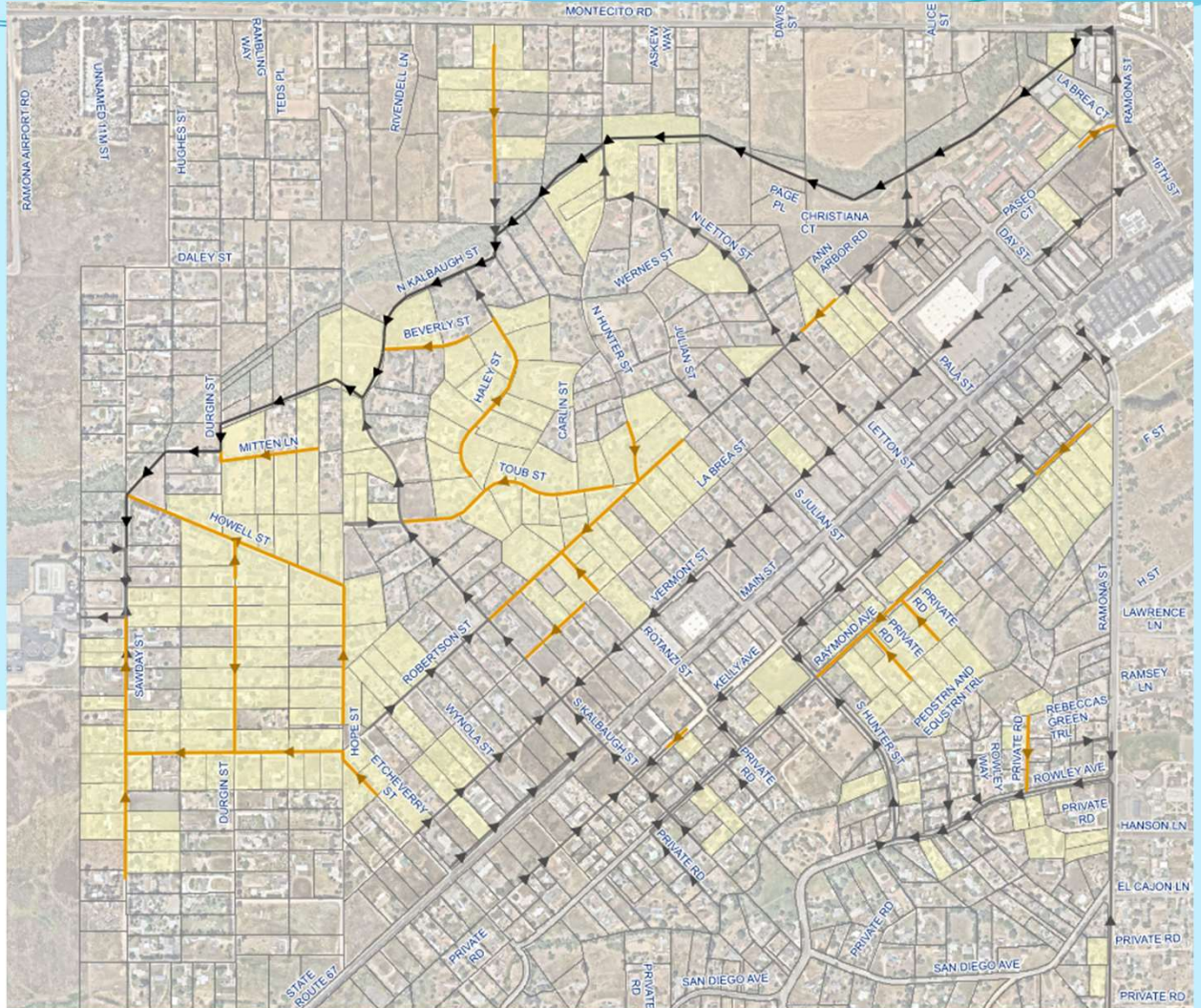
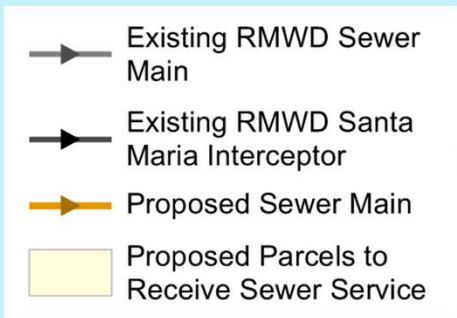


SELECTION CRITERIA

- Total anticipated project cost
- Cost per connection
- Operations and maintenance impact
(minimize lift stations and force mains)
- Environmental impact (Santa Maria Creek, floodway)
- Easements/land acquisition required
- Public interest

RECOMMENDED PHASE I PROJECT

- Area 1 parcels (196 EDUs)
- 19,100 LF of new gravity sewer mains (mostly in dirt roads)
- No sewer lift stations



RECOMMENDED PHASE 1 PROJECT

- Permitting/environmental work is not anticipated to be complex
- Potential permitting:
 - County of San Diego Public Works (excavation, encroachment, traffic control permits)
 - County of San Diego Public Works, Flood Control Section
 - US Army Corps of Engineers (jurisdictional determination for Santa Maria Creek)
- Additional research required for easements
- Preliminary cost opinion

EDUs	Preliminary Cost Opinion	Cost/EDU
196	\$27,800,000	\$141,837

IMPLEMENTATION CHALLENGES – PROP NN

- Voter proposition from 1998
- Limits District to:
 - Replacing existing infrastructure
 - New infrastructure that exceeds \$3M* must go to a District-wide vote
- Options for this project:
 1. Complete in parts (<\$3M), with ~1 project per year
 2. Get voter approval in 2026
 3. Modify Prop NN in 2026 to exclude grant funded projects where the District capital or debt does not need \$3M

**Was \$1M in 1998 but is increased annually by Consumer Price Index as per ballot language*





QUESTIONS?

N|V|5