

Agenda

MORNING

Introductions (9:00 - 9:20 am)

- a. Why are we here?
- b. Program Team
- c. Icebreaker

Program Background (9:20 – 10:15 am)

- a. SAFER Acres Drinking Water (DW) Project
- b. Ramona Septic-to-Sewer Project
- c. IRWM Funding Support (DW/WW)
- d. Outreach Results
- e. Q&A

Break (10:15 -10:30 am)

Developing Vision (10:30 - 11:15 am)

- a. What is a vision statement?
- b. Brainstorming vision statement language as a group
- c. Finalize Vision Statement

Break (11:15 – 11:25 am)

Developing Mission (11:25 – Noon)

- a. What is a mission statement?
- b. Brainstorming mission statement language as a group

Lunch Break (Noon – 12:30)

AFTERNOON

Finalize Mission Statement

Developing Guiding Principles (12:30 – 1:30 pm)

- a. What are guiding principles?
- b. Brainstorming guiding principle language as a group
- c. Finalize guiding principles

Break (1:30 – 1:45pm)

Closing & Sign the Charter (1:45 – 2 pm)

- a. Includes vision and mission statement, guiding principles and signatures on a 1-page poster
- b. Take a photo to celebrate the group accomplishment!



Welcome!

©2024. Funding for this project has been provided in full or in part under the Safe and Affordable Funding for Equity and Resiliency (SAFER) Drinking Water Program through an agreement with the State Water Resources Control Board. The contents of this document do not necessarily reflect the views and policies of the foregoing, nor does mention of trade names or commercial products constitute endorsement or recommendation for use.





Ramona Community Chartering Workshop

June 28th, 2025



Why are we here?

- To inform the Ramona community about the projects happening in their area
- Solicit input from the community
- Determine if more people are interested in connecting to water and/or sewer service
- To develop a 1-page program charter to guide the Program Team



Program Team

- Rural Community Assistance Corporation (RCAC)
- Ramona MWD
- NV5
- State Water Resources Control Board



ICEBREAKER

Share your Name

Title

High School Mascot

Something people may not know about you

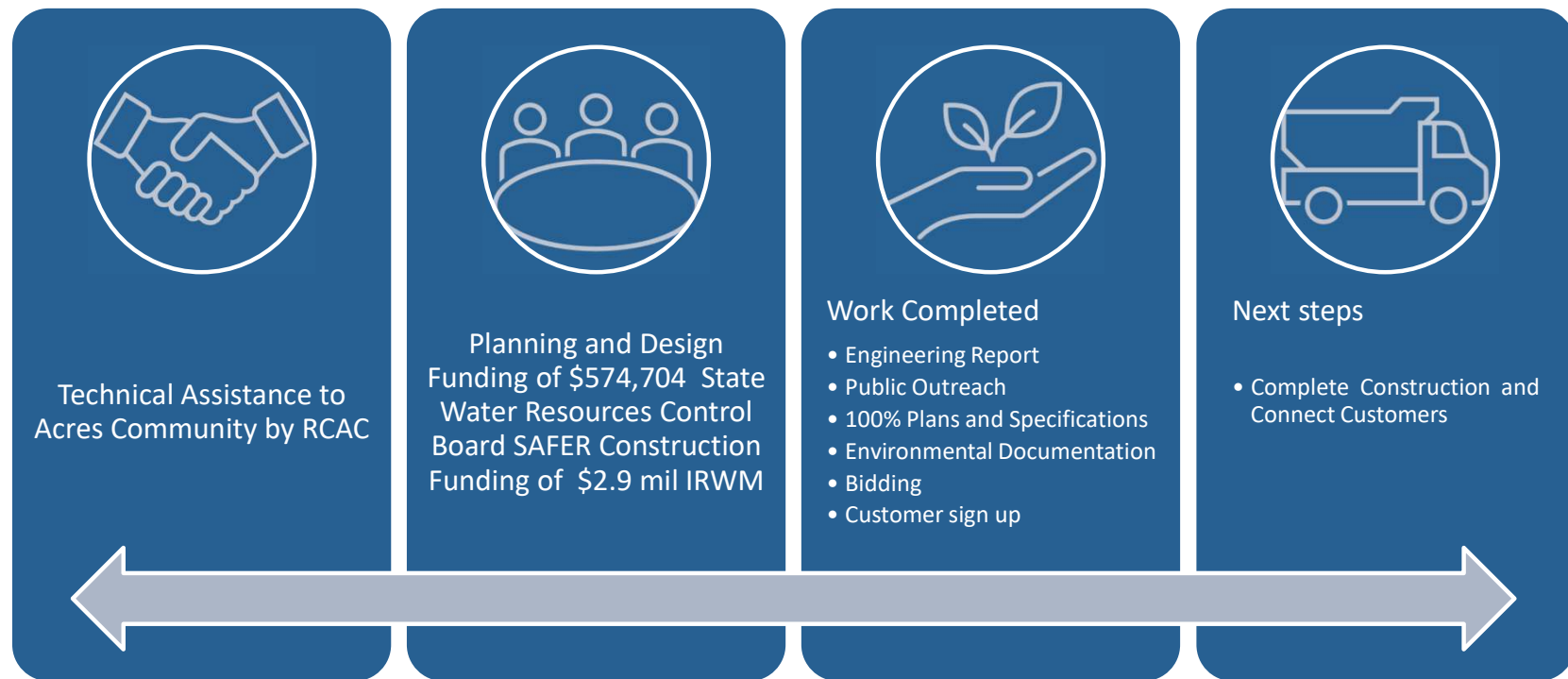


Acres Community – SAFER Phase 1 Project

Victor Coronado, RCAC



Background: Planning under SAFER



Project is funded through grants, not current ratepayers

Project Benefits

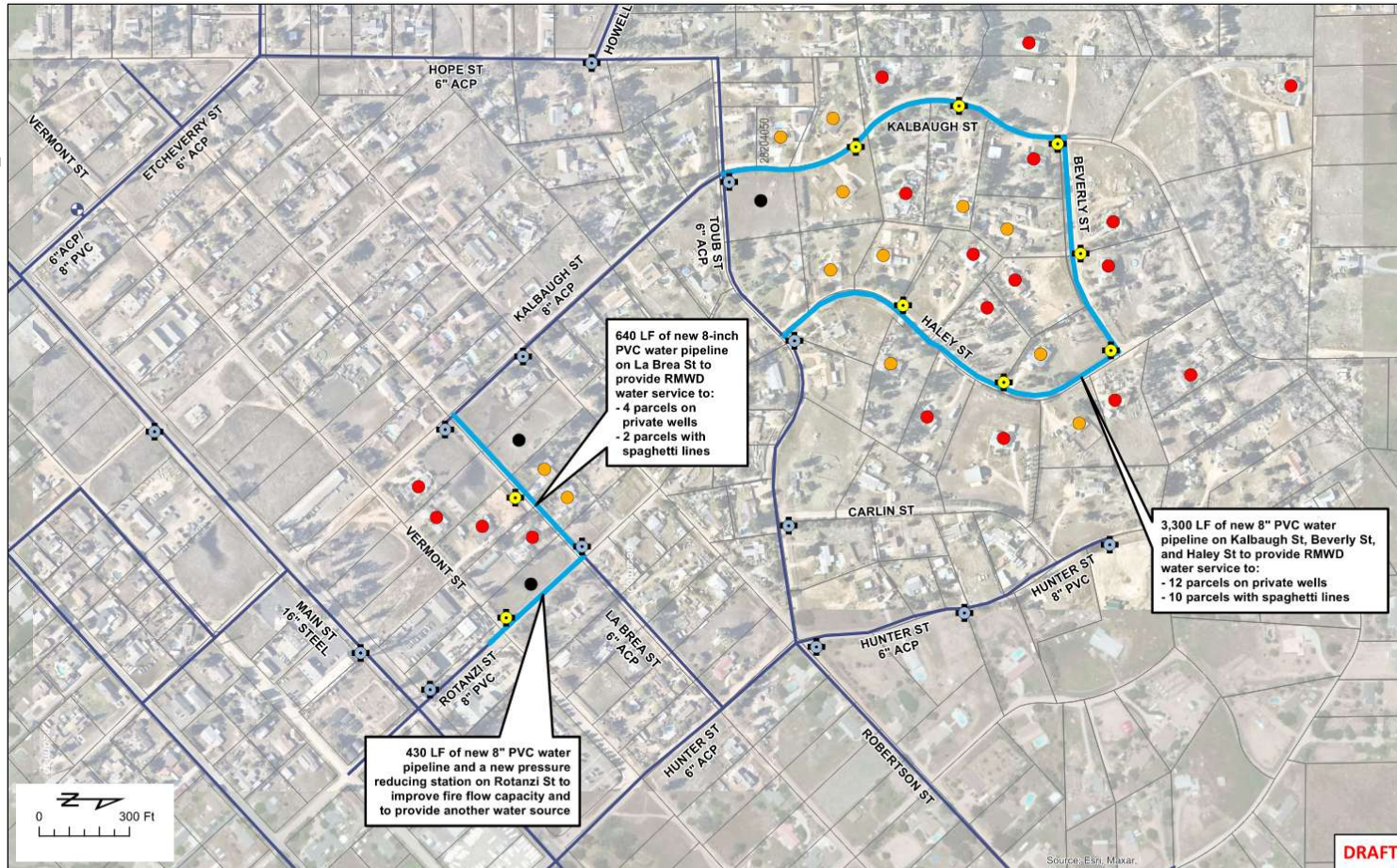
Safe and reliable water supply from Ramona MWD

- Reduced drought impacts
- Meets all Drinking Water Standards (including nitrate and uranium)
- Reduced salinity in water

Replaces “Spaghetti lines” with connections at property line increasing reliability

Provides adequate fire flows

- No need for on-site storage
- May reduce insurance costs



Legend			
	Proposed Water Line		Proposed Hydrant
	No Water Service		Empty Lot
	RMWD Water Line		Existing Hydrant
	Spaghetti Line		

NV5
 15039 AVENUE OF SCIENCE, SUITE 200
 SAN DIEGO, CA 92128
 P. 858.395.0500 WWW.NV5.COM

**RAMONA ACRES CONSOLIDATION - PHASE 1 FEASIBILITY STUDY
 RECOMMENDED PROJECT**

DATE SUBMITTED: JULY 2024

DRAFT

EXHIBIT
1

SCALE
 1 inch = 300 feet

JOB NUMBER
 227522-0001354.01



Project Timeline

- Project currently under construction
- Kalbaugh/Beverly Haley Loop expected to be completed by end of July 2025
- Rotanzi/La Brea work expected to start in July and expected to be completed by the end of November 2025

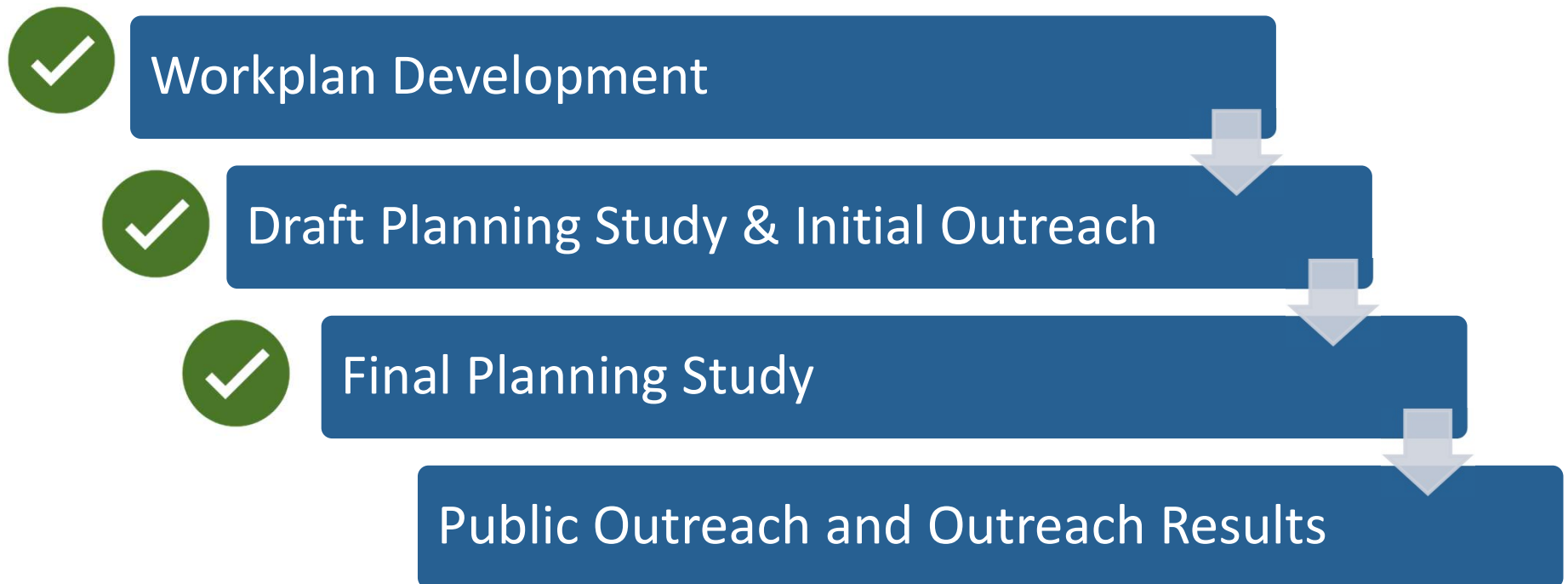


Ramona Acres Septic-to-Sewer Project

Aaron Schneider, NV5



Stage 1: Initial Planning and Outreach (2 years)



Stage 2: Complete CWSRF Funding Application (2.5 years)



General Package



Environmental
Package



Technical Package
(30% Design)



Financial Security
Package

Stage 2 & 3: State App. Review & Construction (3.5 Years)



State Review, Contract for Funding



Final Design and Bid Project for Construction



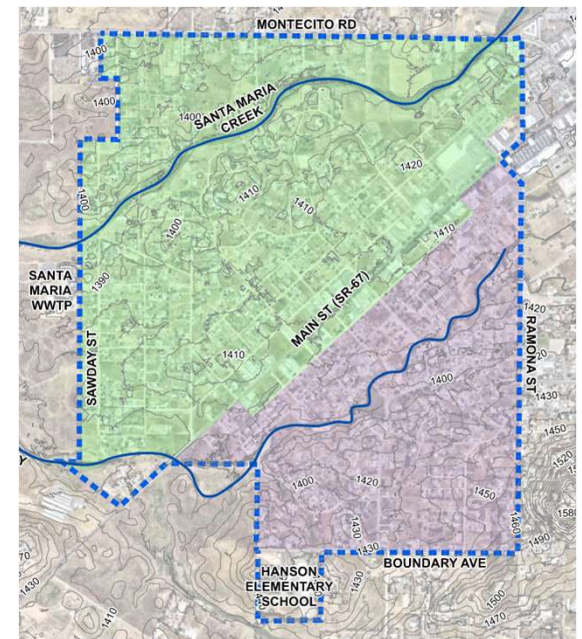
Complete Construction per Plans & Specs – connect customers



Construction Oversight

Planning Study Background







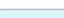


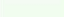


- Expanding RMWD sewer service to customers currently on septic systems
- Protect groundwater quality and reduce maintenance of septic systems
- Study prepared for RCAC and funded by SWRCB SAFER (S2S) program
- Large initial study area

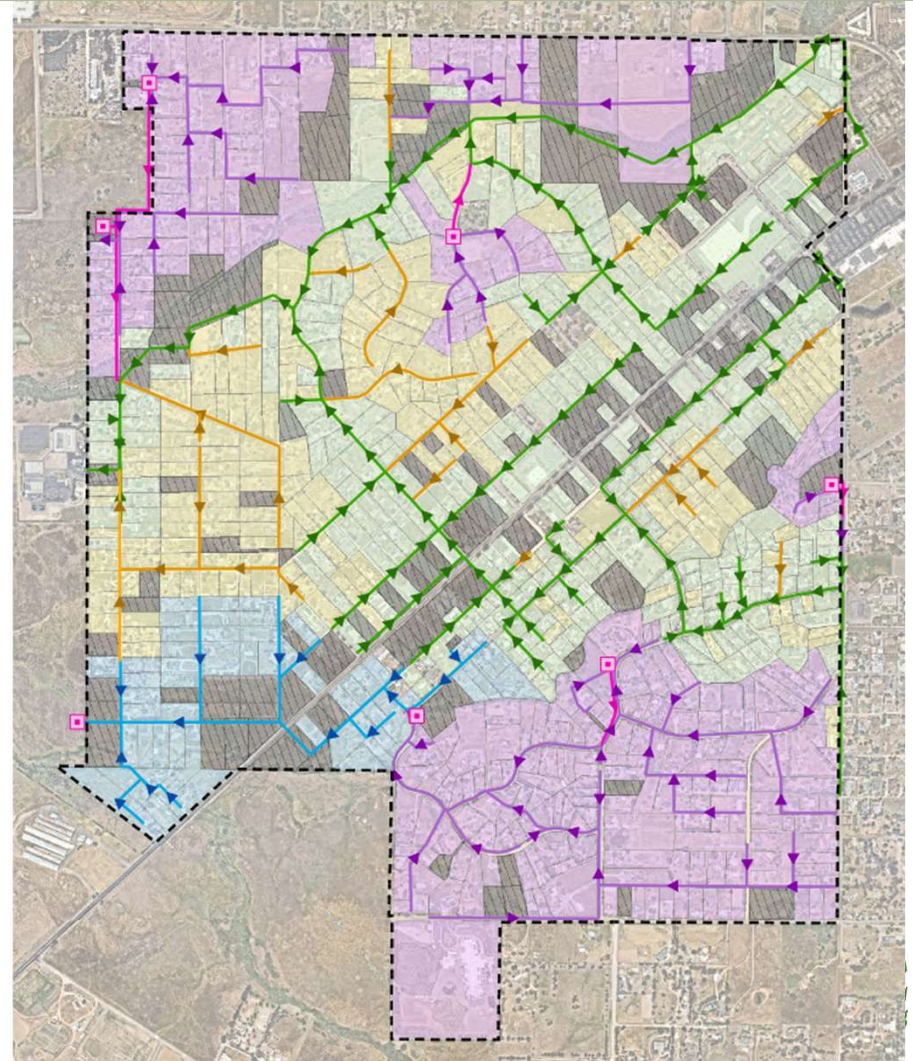


Preliminary Sewer Layout Development

- Developed based on topography of study area
- Gravity sewer mains prioritized
- Delineated study area into (3) areas
 - **Area 1** – Parcels adjacent to existing RMWD sewers and parcels that can be connected with gravity sewers more easily
 - **Area 2** – Southwest area that requires a sewer lift station
 - **Area 3** – Other areas requiring lift stations or pipelines in environmentally sensitive areas.

Planning Study Preliminary Sewer Layout

-  Proposed Lift Station
-  Existing RMWD Sewer Main
-  Area 1 Sewer
-  Area 2 Sewer
-  Area 3 Sewer
-  Proposed Force Main
-  Area 1 Parcels
-  Area 2 Parcels
-  Area 3 Parcels
-  Vacant Parcels
-  Parcels with Existing Sewer Service
-  Study Area



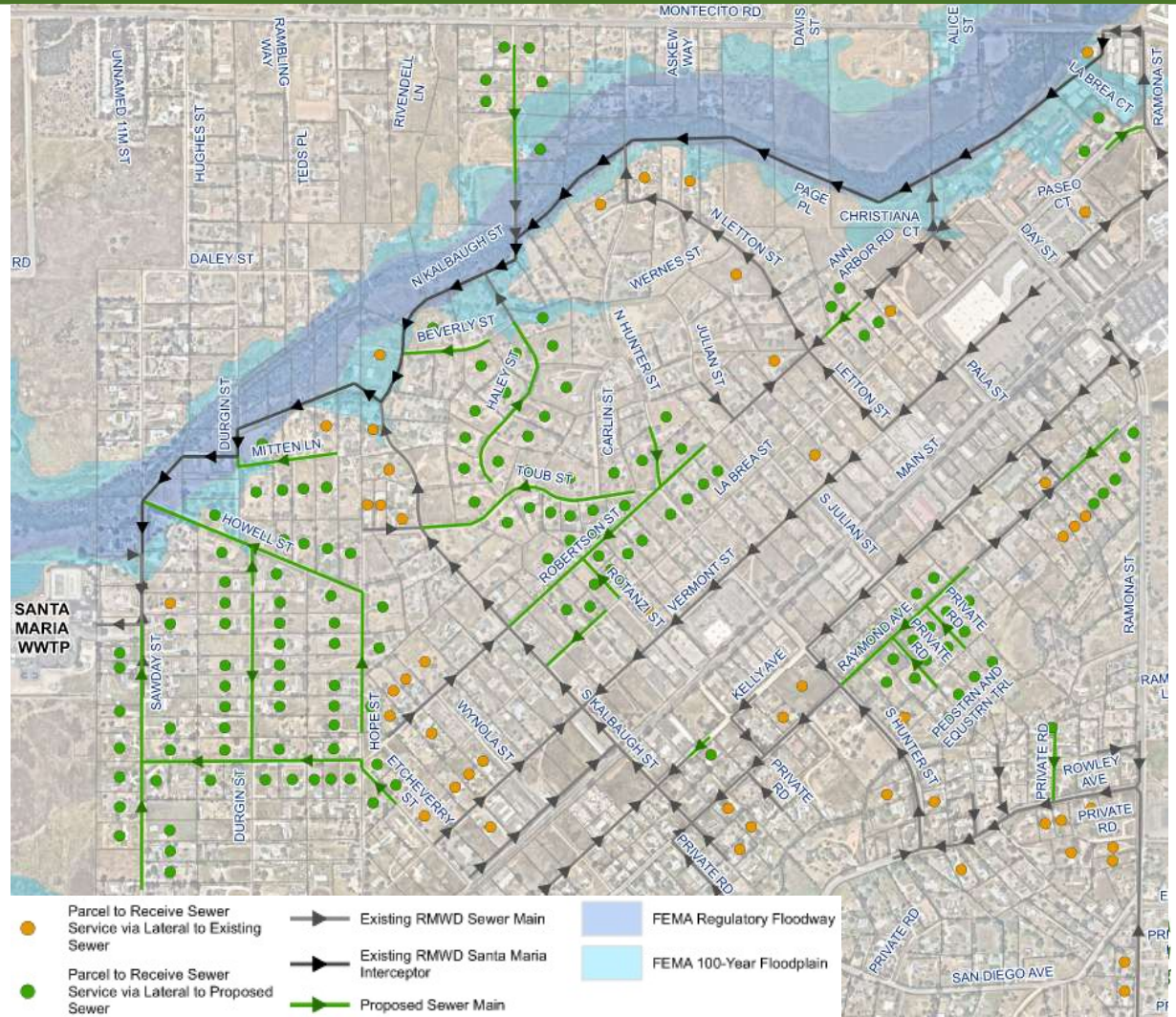
Selection Criteria for Recommended Project

- Total anticipated construction cost
- Cost per connection
- Operations and maintenance impact (minimize lift stations and force mains)
- Environmental impact (Santa Maria Creek, floodway)
- Easements/land acquisition required
- Public interest

Recommended Phase 1 Project

- Area 1 Parcels (196 EDUs)
- 19,100 LF of new gravity sewer mains
- No Lift Stations

Preliminary Cost Opinion	Cost/EDU
\$28,600,000	\$145,918



Proposition NN (1988) Update

- Explained issue with Prop NN at Dec 2024 Outreach Meeting
 - Limits “new” projects District can complete to less than ~\$3M without a District-wide vote
- Due to size of sewer project (\$28M), District is planning to put two items on Nov 2026 local ballot:
 - Prop NN modifications
 - TBD but includes removing language on grant funded projects
 - *This septic to sewer project*
- District cannot campaign for ballot measures





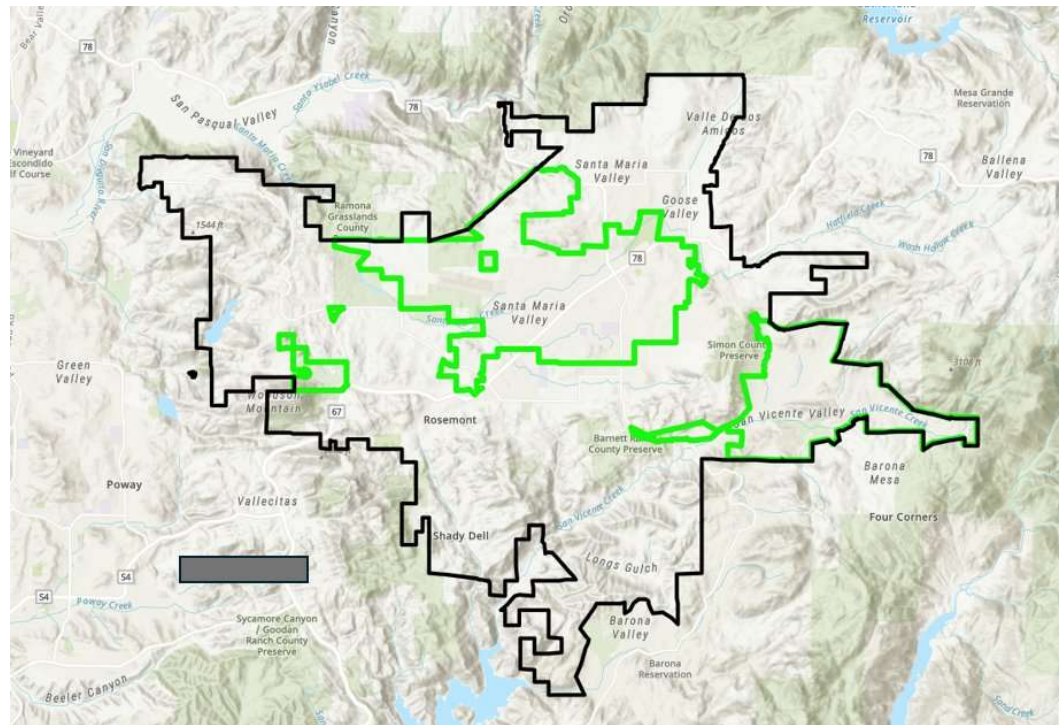
Funding Under IRWM for New Water and/or Sewer Service

Erica Wolski, Ramona MWD



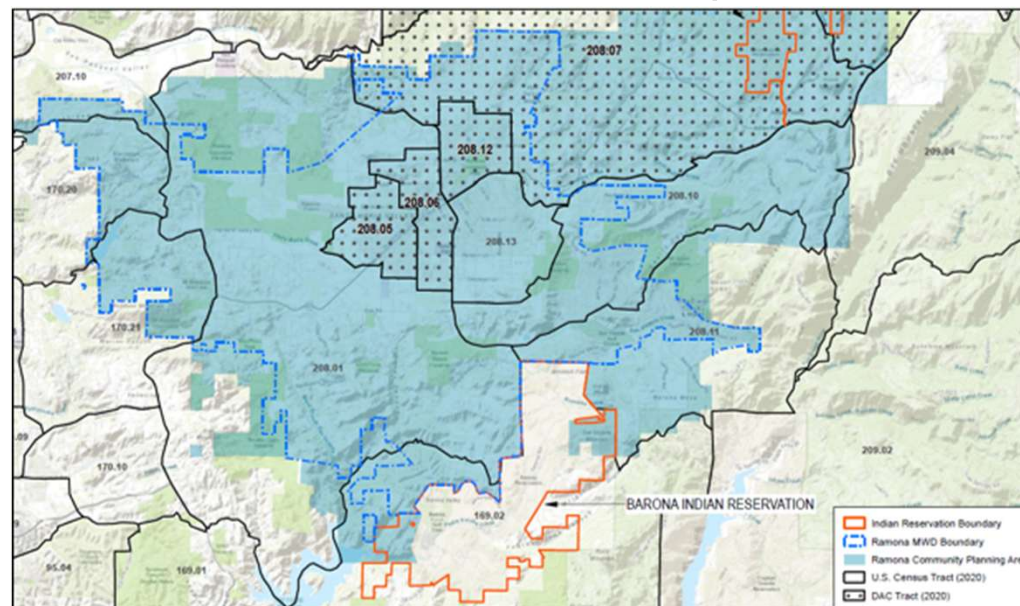
Eligibility to Participate

- Within RMWD boundary
- Currently uses septic system for sewage disposal and/or obtains domestic water from a private well.
- Located adjacent to an existing water or sewer line



Eligibility to Participate

- Within a low-income census tract or individual demonstrated to be low income (<80% of State's MHI)



Off-Site Costs Paid for by this Grant Program

Water connections:

- New service lateral from water main to parcel or right of way boundary
- ¾-inch water meter
- New backflow protection device

Sewer connections:

- New sewer lateral from the sewer main to the parcel or right of way boundary

On-site costs must be paid by homeowner



Project Benefits



Safe and reliable water supply from RMWD

- Reduced drought impacts
- Meets all Drinking Water Standards (including nitrate and uranium)
- Reduced salinity in water



Improved sanitation

- No more septic failures
- Reduces nitrate and bacteria loading to ground water and Santa Maria Creek



FAQs-Estimated Monthly Water and Sewer Bills

Estimated Fees for Water Use

- Base Fee: 3/4” or 5/8” meters: \$46.54 per month + ave water use fee of \$107.72 per Month
- \$8.74 per unit (100 cubic feet) of water

Estimated Fees for Sewer Service

- Sewer costs billed annually on property tax bill
- Annual cost per EDU is \$821.57



Base Fee + Water Use Fees = Total Monthly Bill



How to Participate in this Project - Water

- Submit a signed Participation Form
- If eligible and funding available, meter is installed within approx. 2 months of notification of eligibility and completed paperwork
- Phase 1 – funds spent by Dec 31, 2025
 - Selected 7 customers to date
 - Can connect an additional 3 to 15
 - Depends on final Phase 1 water line costs
- Phase 2 - # to be determined – deadline: Sep 2027



How to Participate in this Project - Sewer

- Requires grant amendment from state of California Dept of Water Resources (Late 2025)
- Collecting interest forms now
 - Using RCAC sewer interest data (first priority)
 - Along with District-wide list of parcels adjacent to sewer lines (will outreach to those that RCAC has not contacted)
- Sewer conversion requires some onsite investigation of septic tank location and house elevation
- Phase 2 - # of customers TBD – deadline: Sep 2027





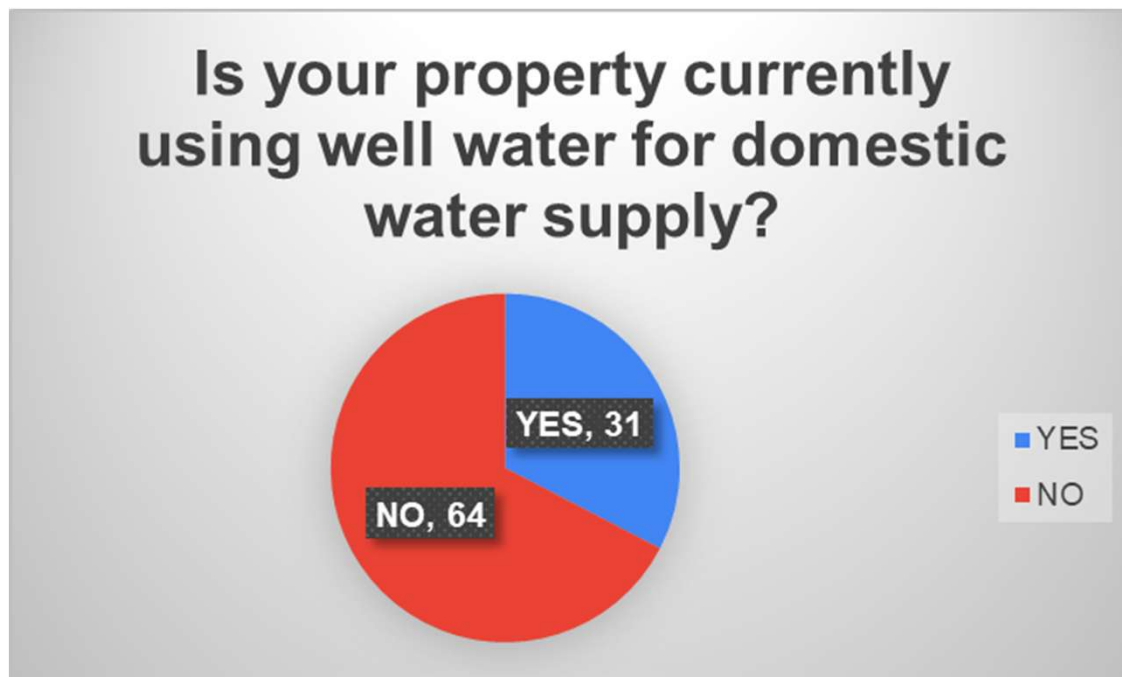
RCAC
www.rcac.org

Outreach Results

Jaime Styer, RCAC



Is your property currently using well water for domestic water supply?



- 95 total responses
- 31 Yes's – 33%
- 64 Nos – 67%

If so, would you consider connecting to the District for your drinking water supply if the connection would be at a nominal cost to you and you could also keep your well water supply for other uses?

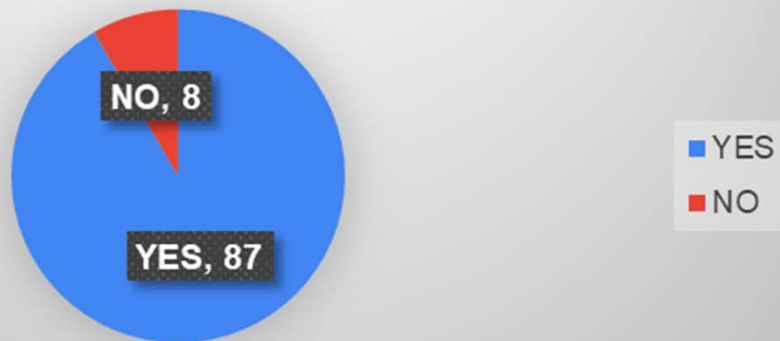
If so, would you consider connecting to the District for your drinking water supply?



- 24 total responses
- 15 Yes – 62%
- 9 No – 38%

Is sewage disposal on your property currently provided through an on-site septic system?

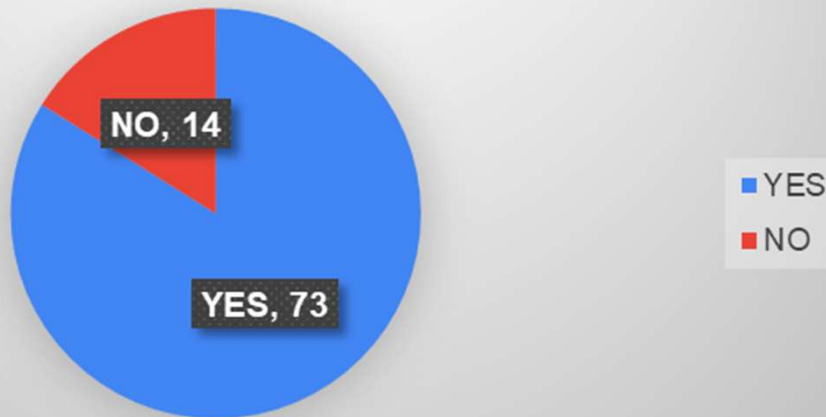
Is sewage disposal on your property currently provided through an on-site septic system?



- 95 total responses
- 87 Yes – 92%
- 8 Nos – 8%

If so, would you be interested in connecting to the District for sewer service, if a sewer connection could be provided at a nominal cost to you?

If so, would you be interested in connecting to the District for sewer service?



- 87 total responses
- 73 Yes – 84%
- 14 Nos – 16%

Key:

- Interest in Water Connection – Blue (7)
- Interest in Sewer – Green (64)
- Interest in Both Water and Sewer – Purple (9)



Common Concerns

Financial

- Cost of Connection
- Ongoing Water Bills
- Desire for Detailed Cost Estimates



Trust & Communication

- Distrust of Ramona MWD & Government
- Application Confusion
- Need for Clear Info



Logistical & Legal

- Renter vs. Owner Gap
- Construction Disruptions
- Maintenance Responsibilities
- Private Well Use



Q&A

10:00 – 10:15 am

Break

10:15 – 10:30 am

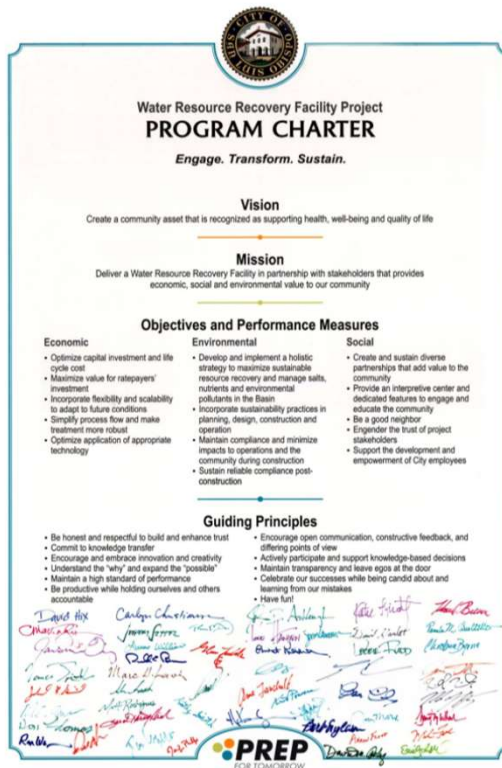


Ramona Community Chartering Workshop

Jasmine Diaz, RCAC



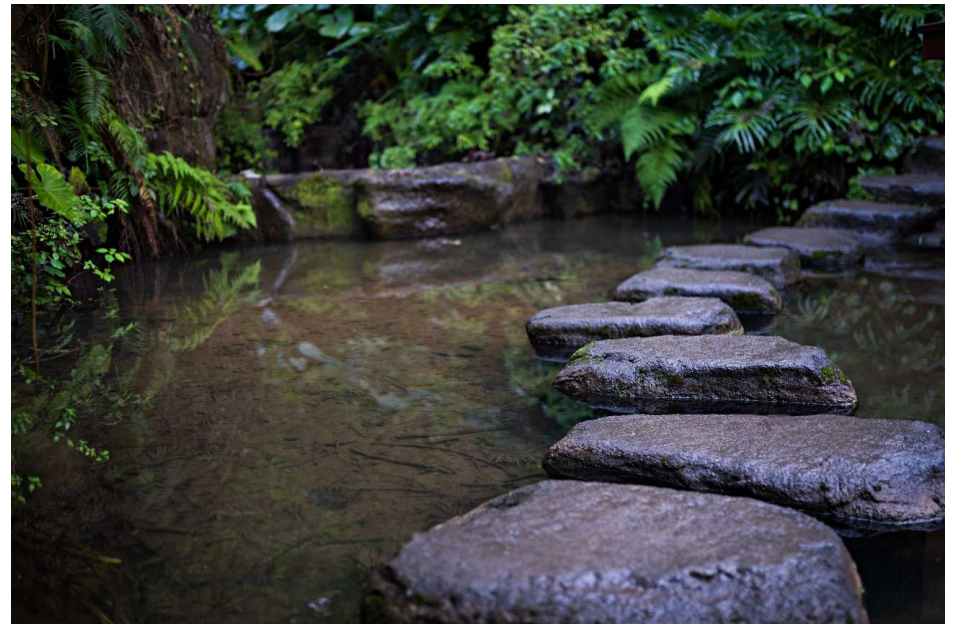
Why are we inviting you in developing a Charter?



- Gain an understanding of what is important to all interested parties
- Create buy-in through collaboration and commitment
- Document vision, mission, and guiding principles
- Create a guiding document that can help steer decisions throughout the life of the program
- Provide metrics for the project team for determining success
- Create a sense of community among different community members and strengthen the program network

How will we create a Charter?

1. Clarify the “Why” of the project
2. Translate the “Why” into:
 - Vision
 - Mission
 - Guiding Principles
3. Document and solicit feedback
4. Sign and celebrate!
5. Use the Charter!



Vision

Ramona Strategic Water and Sewer Infrastructure Program

Vision Statement - Definition

- Definition: statement that describes what the group plans to achieve in the long-run

(10 to 50 years)

- Aspirational
- Inspirational
- Looks to the future
- Aligns with core values
- One sentence long



Vision Statement - Examples

- RCAC's Vision: Rural and Indigenous communities throughout the West are empowered to be vibrant, healthy and thriving.
- Cazadero Regional Project Vision: Deliver reliable, affordable, safe and healthy drinking water through sustainable and resilient systems for the benefit of our community.
- SLO WRRF Program Vision: Create a community asset that is recognized as supporting health, well-being and quality of life.
- APUD Project Vision: Create a reliable and cost-effective wastewater system that sustainably meets the long-term needs of the community.

Vision Statement Exercise

- Questions:
 - Why do you have water and wastewater systems?
 - What do you envision for the future of your water and wastewater system?
 - Why are you here today?
 - Why is there a need for these projects?
- Notes:



Break

Vision Statement Options

- See word document for options and to word smith the final statement

Mission

Ramona Strategic Water and Sewer Infrastructure Program

Mission Statement - Definition

- Definition: defines and explains, in simple concise terms, what a program/project/organization does and what purpose it serves.
 - What do we do?
 - Why do we do it?
 - Who do we do it for?
 - What would happen if we don't do this?
 - Why does this matter?

Mission Statement - Examples

- **RCAC's Mission:** RCAC partners with rural and Indigenous communities to achieve their vision and wellbeing through technical assistance, training, financial resources and advocacy.
- **Cazadero Regional Project:** Create a locally and effectively managed climate-resilient water system that maximizes, protects, and develops shared resources to equitably ensure enduring access to clean, high-quality water for the community.
- **SLO WRRF Program Mission:** Deliver a Water Resource Recovery Facility in partnership with stakeholders that provides economic, social and environmental value to our community.
- **APUD Project Mission:** To deliver an optimal wastewater system that utilizes State and/or Federal funding, and successfully treats the community's wastewater, protects public health, and meets regulatory requirements.

Mission Statement Exercise

- Questions:
 - What does the Program do?
 - Why do we provide community water and wastewater systems?
 - Who do we serve?
 - What would happen if we don't do this?
 - Why does this Program matter?
- Notes:



Break

Mission Statement Options

- See word document for options and to word smith the final statement

Guiding Principles

Ramona Strategic Water and Sewer Infrastructure Program

Guiding Principles

- Definition: Guidelines that drive behavior or mindset.
 - Stem from values
 - Consistent with vision
 - Consistent with the experience the community wants to deliver to communities/rate payers
- **Identifies what is essential to implement a project**
(not “how to do it”)
- What motivates you to implement vision and mission statement

Wastewater System Upgrades Project Charter

VISION

Reliable and cost-effective wastewater system that sustainably meets the long-term needs of the community.

MISSION

To deliver an optimal wastewater system that utilizes State and/or Federal funding, and successfully treats the community's wastewater, protects public health, and meets regulatory requirements.

GUIDING PRINCIPALS

- Act in the best interest of our customers
- Work collaboratively as a team
- Build trust between APUD and consulting team
- Remain grounded in a shared vision
- Commit to tackling the community's unique challenges
- Leverage expert guidance and leadership
- Be open minded to creative solutions
- Maintain transparent and routine communication with the community
- Provide stakeholders and decision-makers with appropriate information to feel confident in decisions and outcomes
- Inform, educate, and engage APUD customers
- Deliver inclusive communications for non-English speakers

PERFORMANCE MEASURES

- Maximize value for customers
 - Deliver the project efficiently and on time
 - Create a facility that APUD can affordably operate and maintain
 - Secure grants and low-interest loans to limit financial impact on customers
 - Deliver a project that maintains compliance and uninterrupted service through construction
 - Design a treatment process that considers long-term regulatory requirements and minimizes future risks
 - Strive to support local water supply reliability
 - Evaluate and consider beneficial reuse options
 - Create a system that is flexible and scalable to accommodate future growth and needs
 - Explore opportunities to support local trades and labor
 - Create professional development opportunities for existing staff
 - Engage key project stakeholders throughout the process
 - Be efficient with APUD's time and resources
-

APUD's Guiding Principles

- Act in the best interest of our customers
- Work collaboratively as a team
- Build trust between APUD and consulting team
- Remain grounded in a shared vision
- Commit to tackling the community's unique challenges
- Leverage expert guidance and leadership
- Be open minded to creative solutions
- Maintain transparent and routine communication with the community
- Provide stakeholders and decision-makers with appropriate information to feel confident in decisions and outcomes
- Inform, educate and engage APUD customers
- Deliver inclusive communications for non-English speakers

VISION

Reliable and cost-effective wastewater system that sustainably meets the long-term needs of the community.

MISSION

To deliver an optimal wastewater system that utilizes State and/or Federal funding, and successfully treats the community's wastewater, protects public health, and meets regulatory requirements.

GUIDING PRINCIPALS

- Act in the best interest of our customers
- Work collaboratively as a team
- Build trust between APUD and consulting team
- Remain grounded in a shared vision
- Commit to tackling the community's unique challenges
- Leverage expert guidance and leadership
- Be open minded to creative solutions
- Maintain transparent and routine communication with the community
- Provide stakeholders and decision-makers with appropriate information to feel confident in decisions and outcomes
- Inform, educate, and engage APUD customers
- Deliver inclusive communications for non-English speakers

PERFORMANCE MEASURES

- Maximize value for customers
- Deliver the project efficiently and on time
- Create a facility that APUD can affordably operate and maintain
- Secure grants and low-interest loans to limit financial impact on customers
- Deliver a project that maintains compliance and uninterrupted service through construction
- Design a treatment process that considers long-term regulatory requirements and minimizes future risks
- Strive to support local water supply reliability
- Evaluate and consider beneficial reuse options
- Create a system that is flexible and scalable to accommodate future growth and needs
- Explore opportunities to support local trades and labor
- Create professional development opportunities for existing staff
- Engage key project stakeholders throughout the process
- Be efficient with APUD's time and resources

Water Resource Recovery Facility Project Guiding Principles

- Be honest and respectful to build and enhance trust
- Commit to knowledge transfer
- Encourage and embrace innovation and creativity
- Understand the “why” and expand the “possible”
- Maintain a high standard of performance
- Be productive while holding ourselves and others accountable
- Encourage open communication, constructive feedback, and differing points of view
- Actively participate and support knowledge-based decisions
- Maintain transparency and leave egos at the door
- Celebrate our successes while being candid about learning from our mistakes
- Have fun!

Cazadero's Guiding Principles

Delivery

- Design an adaptable, flexible, and affordable system
- Proactively design for flood, fire, drought, and earthquake
- Stay abreast of upcoming regulations affecting systems
- Develop change management process
- Plan for operational continuity
- Streamline operations
- Plan for transition
- Prioritize alternatives with low Operations & Maintenance
- Minimize negative community and environmental impacts
- Verify regulatory compliance
- Cultivate ongoing risk management strategies

Communication and Outreach

- Emphasize benefits of participating in project while acknowledging community hesitation or concerns
- Encourage buy-in, engaging neighbors
- Prioritize local resident involvement, engagement, and project-ownership
- Work cooperatively to maximize shared benefit
- Remain respectful of all perspectives and opinions
- Promote project transparency and clear communication
- Make information easily accessible
- Educate community on future and current true cost of water
- Educate community on existing and upcoming regulations

Fiscal Responsibility

- Consider the needs of low-income and vulnerable residents
- Obtain as much grant funding as possible
- Prioritize fiscal responsibility on the part of the subcontractors and project team
- Financially plan for flood, fire, drought, and earthquake
- Leverage the strengths of all systems to maximize shared benefits and success

Project Charter

Vision

Deliver reliable, affordable, safe and healthy drinking water through sustainable and resilient systems for the benefit of our community.

Mission

Create a locally and effectively managed climate-resilient water system that maximizes, protects, and develops shared resources to equitably ensure enduring access to clean, high-quality water for the community.

Guiding Principles

Delivery

- Design an adaptable, flexible, and affordable system
- Proactively design for flood, fire, drought, and earthquake
- Stay abreast of upcoming regulations affecting systems
- Develop change management process
- Plan for operational continuity
- Streamline operations
- Plan for transition
- Prioritize alternatives with low Operations & Maintenance
- Minimize negative community and environmental impacts
- Verify regulatory compliance
- Cultivate ongoing risk management strategies

Communication and Outreach

- Emphasize benefits of participating in project while acknowledging community hesitation or concerns
- Encourage buy-in, engaging neighbors
- Prioritize local resident involvement, engagement, and project-ownership
- Work cooperatively to maximize shared benefit
- Remain respectful of all perspectives and opinions
- Promote project transparency and clear communication
- Make information easily accessible
- Educate community on future and current true cost of water
- Educate community on existing and upcoming regulations

Fiscal Responsibility

- Consider the needs of low-income and vulnerable residents
- Obtain as much grant funding as possible
- Prioritize fiscal responsibility on the part of the subcontractors and project team
- Financially plan for flood, fire, drought, and earthquake
- Leverage the strengths of all systems to maximize shared benefits and success

Ideas for Guiding Principles

Vision:

Mission:

- Break out into groups & brainstorm a list
- What are things you always want the program team to keep in mind when working on this project?

Break

Final Chartering Document

- Word Document

Time to Sign and Show Your Support!

Thank You for participating!

CONTACT INFORMATION

- Victor Coronado (RCAC) – (530)723-0774, victor.coronado@rcac.org
- Jaime Styer (RCAC) – (720) 926-7041, jaime.styer@rcac.org